

---

*In this issue:*

### **News**

- Hoyt Island success continues; Peggy Holton honored.
- Mary Peatman Preserve is being prepared with public paths.
- Norwalk auto dealer is donating, and promoting NLT.



### **Coming events**

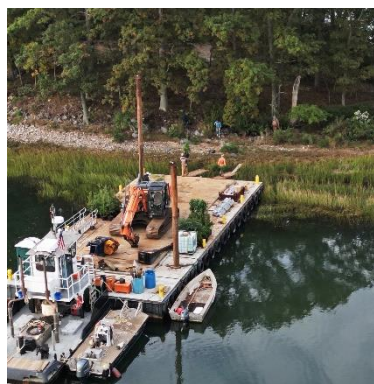
- April 27 - Visit NLT's table at Norwalk Earth Day Festival.
  - May - Norwalk students again will experience 'Farm Creek' - Please Volunteer now.
  - More volunteering opportunities below.
-

## Hoyt Island: Replanting Success Continues!

At last! We planted 100 young trees on our 3-acre island preserve, at the mouth of Village Creek in South Norwalk. For several years, we underwent a major program to raise the significant funds need to properly remove toxic contaminants from the island, and to replace the affected areas with clean soil.

Last fall, a barge delivered young, indigenous trees to the island, where they were moved into place and planted with the help of our volunteers under the able supervision of NLT VP Mary Verel. More volunteer sessions are planned

in 2024 to improve the nature of the island for the benefit of wildlife.



---

In related news, we have officially designated this island as the **Margaret and Steve Holton Bird Sanctuary on Hoyt Island** to honor Peggy Holton and her late husband, Steve. Their generous donations enabled the NLT to secure a matching grant from the Long Island Sound Futures Fund, to replant the bird sanctuary with indigenous plants that will attract and feed birds migrating on the Atlantic Flyway. This work will be completed this Spring. This island will be posted as off limits to visitors as it is hoped that the island will be a breeding ground and nesting site for important bird species in our region.



Peggy has been a valued Board member for over two decades, playing a pivotal role in acquiring the Farm Creek property and has been a vital member of the Executive Committee since 2006. She dedicated herself to projects like the "White Barn Project," the Farm

Creek acquisition, and the Hoyt Island endeavor. Additionally, Peggy has found great joy in engaging with Norwalk's schoolchildren and their teachers, welcoming them annually to Farm Creek for hands-on experiences with nature.

---

### **‘Mary Peatman’ Preserve is on the right path, going public soon.**

Kindly donated by NLT board member John Fitzpatrick, this lovely property is located at 16 Birchside Drive. The former small horse farm is named in memory of John’s late wife, Mary Peatman. This past fall and winter, NLT volunteers have removed invasive species, planted numerous native plants and shrubs, and allowed the native forest to regenerate. We then established a number of intersecting footpaths through the meadow and open woodland. We hope to open this beautiful property to the public later this Spring. Look for an announcement soon!



---

In April, **Norwalk Garavel Subaru** will donate a portion of every vehicle sale or lease to NLT!

Also, to promote this Community Partnership, Garavel Subaru is posting on social media, linking visitors to our website, and we are reciprocating.

We have loaned the dealership several of our beautiful photo-enlargements of nature in Norwalk, now prominently displayed in Garavel's beautiful new Customer Lounge, increasing our visibility to their customers and encouraging them to connect with NLT.



---

**GARAVEL** **SUBARU**

**NORWALK LAND TRUST**

**Garavel Subaru's Charity of the Month**

The Norwalk Land Trust acquires land and preserves it in its natural state for the benefit of Norwalk residents now and forever. The Trust currently stewards over 110 acres of woodlands and open space, providing cleanups and education about land preservation.

**DONATE TO NORWALK LAND TRUST**

Donate Now

**Volunteer opportunities. Join us!**

**May 14** Training for volunteer field trip guides at Farm Creek. No experience necessary! Contact Connie Bennett at [constance.bennett@gmail.com](mailto:constance.bennett@gmail.com)



**Weekly on Wednesdays:** Volunteers are always welcome to help care for our beautiful Farm Creek preserve. Each Wed., 10A.M. to noon. Stewardship is light work. Bring a friend!

**Hoyt Island** - continued improvements by volunteers. (Dates to be announced)

[Donation information](#), please click to our web site page.

*Visit Norwalk Land Trust on social media for latest updates:*



*Copyright (C) 2024 Norwalk Land Trust. All rights reserved.*

Want to change how you receive these emails?

You can [update your preferences](#) or [unsubscribe](#)