

Member pledges \$100K match

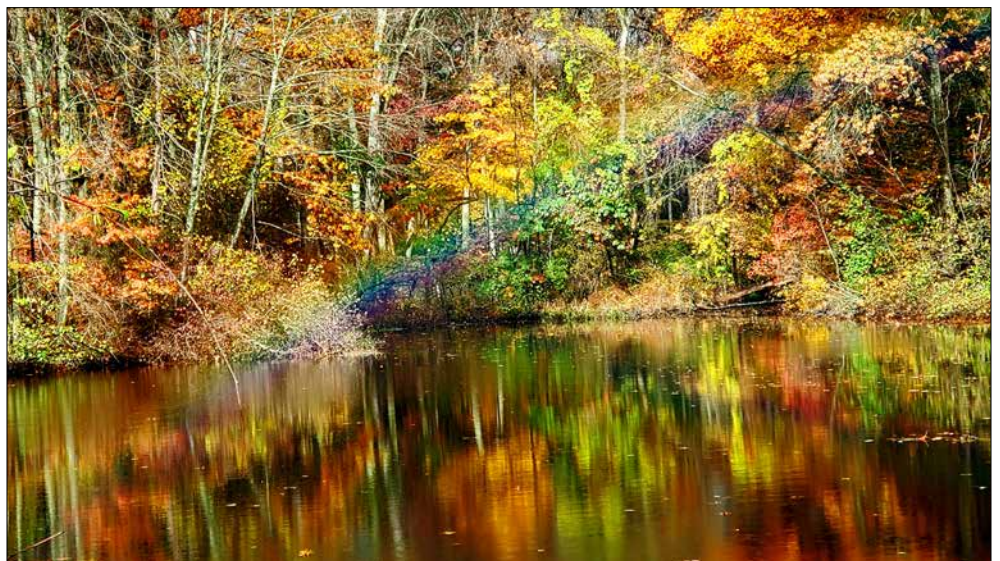
Your pledge to save the White Barn property will be doubled, thanks to a recent commitment from a Norwalk Land Trust member to match donations up to a total of \$100,000.

The 15.2-acre parcel's owners will sell it to the highest bidder. An existing NLT conservation easement protects 5.4 acres of this natural resource in perpetuity, but a city-approved plan allows construction of 15 houses on the remaining acres, which would harm this vital open space in many ways:

- * more than five acres of old growth trees would be clear cut
- * existing wildlife - including endangered species - would be displaced
- * floodwater drainage will accelerate and increase downstream flood risk
- * new pollution sources would feed into Stony Brook, now a class A (pristine) watercourse, draining into the Saugatuck River and L.I. Sound
- * excavation would be needed for a sewer system connection



NLT directors Bill Wrenn and Tammis Lazarus view endangered birds during a January tour of the White Barn property. A \$100,000 challenge grant from an NLT member has energized the campaign to save the parcel from development.



See *WHITE BARN* on 3

NLT Member Dan Verel photographed a rainbow over the pond at White Barn Nov. 6.



Volunteers teach kids

Twenty-six volunteers, seven of whom were new, helped with tours of the Farm Creek Preserve for Norwalk fourth-graders. Above, volunteers Laura Lamorte, Connie Bennett, and Betsy Bain at the Preserve. "We had a little giggle when a deer came prancing across the field near the barn. One of the kids shouted, 'Oh look! There's a kangaroo!'" NLT education program coordinator Tammis Lazarus said.



Smith honored

NLT past president Marny Smith, above, was honored this spring by the Rowayton Gardeners, NLT, and the Rowayton Library for inspiring the lecture series "Our World, Your Call," focused on everyday decisions people can make to benefit the environment.

NLT wins prize

Your Norwalk Land Trust won a \$2,500 prize during the "Environmental Power Hour" on Fairfield County Giving Day in February. The total raised was \$9,716, including the prize money. We will participate in Giving Day again on Feb. 27, 2020.



A monarch butterfly made friends with NLT director Mary Verel at the Farm Creek Preserve's wildflower meadow. "It was late in the season and I think [the butterfly] was cold," Verel said. The new friendship began at a weekly Farm Creek Outreach Day, when members of the community can work with master gardeners and master gardener interns from the Barlett Arboretum to maintain the preserve.



NLT directors Connie Bennett, Midge Kennedy, and JoAnne Jackson on a May tour of a bird sanctuary and nature trails on Darien Community Association property. Volunteer Chris Filmer, right, explained the conservation area's design and features, including education stations for all ages, native plant and pollinator-friendly gardens, bat houses, bird feeders, insect hotels, a pondless waterfall, a rope bridge, stump and log walks, and a rock spiral. The sanctuary is child-friendly and entirely fenced in. The project may serve as an inspiration for a future NLT endeavor.

EDUCATION



Four members of Brien McMahon High School's Serendipity Club planted more than 100 daffodil bulbs recently at the front gate of the Farm Creek Preserve. Left to right, Hannah Nightingale, Cassidy Nash, Mikaela Ortolano, and Katherine Klein. Daffodils were selected because they attract pollinators, are hardy, and will spread naturally.



Volunteer Betsy Bain with fourth-graders who toured the Farm Creek Preserve to learn about the nature and importance of tidal estuaries. Eight Norwalk elementary schools participated in this year's program, which included a day of classroom learning and a field trip to the preserve.



The Land Trust donated 100 re-usable shopping bags to Brownie Scout Troop 50437's bag drive in support of underserved communities. Norwalk banned single-use plastic bags in July; shoppers may bring their own bags, or pay for paper. Above, NLT director Midge Kennedy and the scouts.

WHITE BARN from Page 1

* some existing wetland would be "relocated"

Your gift will create walking paths and native plant gardens from which

the public can enjoy this mature forest and its diverse wildlife. You'll also expand the very successful Outdoor Classroom environmental program for Norwalk Public School students, add-

ing a freshwater biome with different wildlife and plants.

Please pledge today, using the donation form on the back page of this newsletter, and be matched.

Dedicated volunteers oversee 97 acres

It's been a busy season for the Norwalk Land Trust volunteers who look after more than 97 acres of conservation land.

We continued our successful collaboration with the Bartlett Arboretum and UConn Master Gardener Program. Every week, volunteers worked at Farm Creek Preserve to plant native plants, maintain a meadow for pollinators, and remove invasive species.

Your NLT also partnered with the Pollinator Pathway initiative, the City of Norwalk, and Friends of Fodor Farm to create the first Pollinator Pathway Native Teaching Garden directly behind the Fodor Farm Victorian Farm House, which drew monarchs and many other bees and butterflies.

In addition, we participated in restoring Oyster Shell Park and its Sandy Hook Memorial. On October 26 Norwalk Mayor Harry Rilling issued a proclamation recognizing the Norwalk Land Trust as part of the Pollinator Pathway Initiative.

Volunteers removed invasive mugwort and mile-a-minute vine, and planted native flowers and Viburnum at the Wood Acre property.

At Chestnut Hill, we opened the property for woodland walks and plan on tackling invasive Barberry in the spring.

Cleanups at Pink Cloud, Wilson Ave, Little West Cedar, Yost and White Barn Preserve capped a busy but fun summer, and a group of Brien McMahon High School Serendipity Club members planted native spring bulbs for early pollinators at the Farm Creek Preserve.

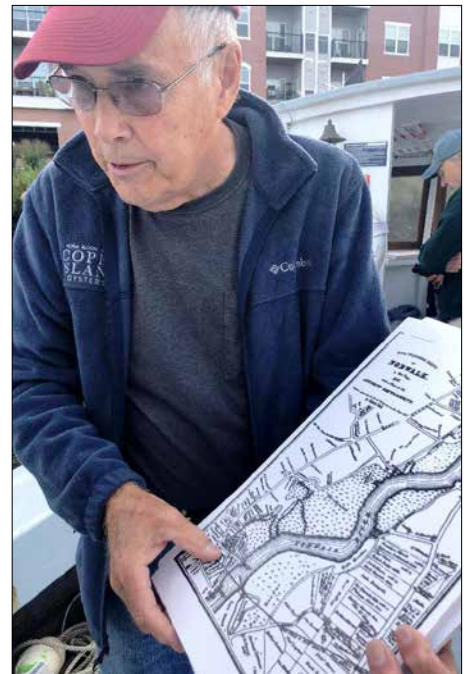


NLT members joined a coalition of environmental groups in support of the Pollinator Pathway project at Oyster Shell Park in Norwalk. Left to right, Ann Farrow, NLT director Mary Verel, Dan Verel, Peter Healy, and Lisa Meserole. Volunteers cleared invasives and planted native trees, bushes, and other plants to support pollinators.

Work on Hoyt Island remediation is moving along, with hopes of late fall or winter start.

Maintaining conserved land is fun and rewarding work. Join us! Email info@norwalklandtrust.org for more information.

Harbor Watch founder Dick Harris displays a map of the Norwalk River during a boat tour that included a demonstration of the group's water quality monitoring process, for NLT director Lisa Shanahan and Norwalk River Watershed Association president Louise Washer. Lawn pesticides and fertilizers harm water quality and vital pollinators. The NLT urges all homeowners to protect both by joining the Pollinator Pathway; see page 6 for info.



NATURE IN OUR CARE



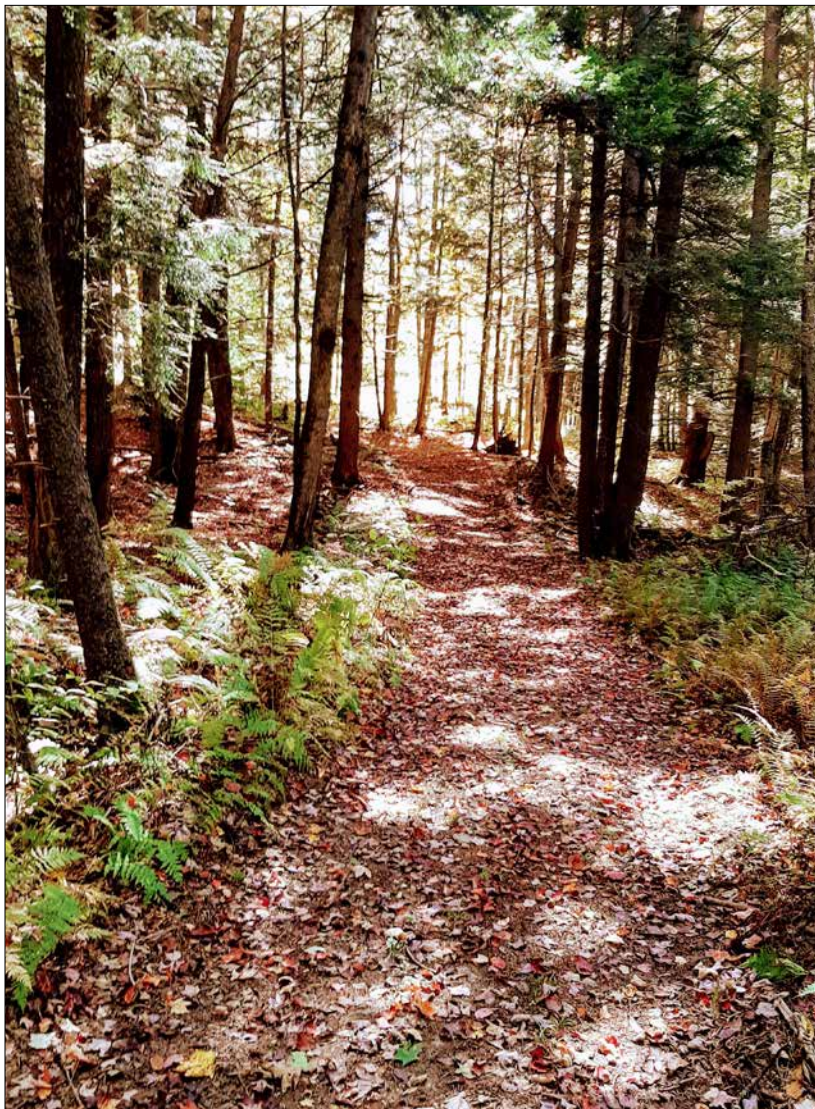
A native bumblebee pollinates a flower in the Pollinator Pathway demonstration garden, installed at Fodor Farm with help from NLT director Mary Verel.



A native zinnia hosts a monarch butterfly.



A monarch butterfly chrysalis ready to open.



The Chestnut Hill Preserve in October. The NLT has begun a monthly “Walk in the Woods” series highlighting a different property each month. Email info@norwalklandtrust.org for info.



Native goldenrod, aster at Wood Acre.

PHOTO BUGS

*Send us your bug photos!
And images of nature in
NLT preserves, or anywhere
in Norwalk. Email:*

info@norwalklandtrust.org

*If we print your photo, you'll
win NLT merchandise.*

Join the Norwalkers who made their yards safe for pollinators.



Photo: Dwight Sipler, Stow, MA

- ☐ I agree to use no pesticides, and include one native plant, so that my yard will be part of Norwalk's Pollinator Pathway, a multi-town, multi-state initiative to provide habitat and nutrition for vital pollinators. I understand that my participation is voluntary and I am free to stop participating at any time, for any reason.

Name _____

Address _____

Phone _____

Email _____

Questions? Email lisashan@msn.com

Return this form to Norwalk Land Trust, PO Box 34, Norwalk CT 06853. If you want to help spread the word with the Pollinator Pathway sign pictured at right, enclose a \$10 check payable to Norwalk Land Trust.





NORWALK LAND TRUST

Directors

D. Seeley Hubbard
President

Peggy Holton
Mary Verel
Vice Presidents

Midge Kennedy
Secretary

Rich Baskin
Treasurer

Connie Bennett
Kate Davies
Julian Henkin
Joanne Jackson
Tammis Lazarus
Bill Nightingale
Lisa Shanahan
Bob Welsh
Bill Wrenn

Advisory Board

Miki Alicastro
Bob Duff
Diane Keefe
Chris Perone
Michael Poler
Amy Rowe-Smith
David Shockley
Marny Smith
Terrie Wood

Norwalk Land Trust
News is published
twice a year by
Norwalk Land Trust.

Bob Welsh
Editor

Laure Dunne
Editor Emeritus



The "Our World, Your Call" lecture series organized by the Rowayton Gardeners and co-sponsored by the NLT won two awards from state and regional garden club federations. Left to right, Rowayton Gardeners board members Kevin Tepas, Kathy Leeds, and Carol Hooper, and NLT director Lisa Shanahan display the awards. Shanahan served as co-chair of the series.

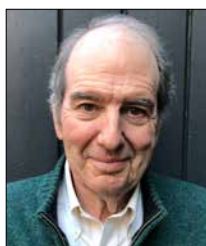
PRESIDENT'S LETTER

Since my last message, the Norwalk Land Trust has been pursuing exciting projects in line with our mission to protect and enhance Norwalk's natural environment.

Your Land Trust is now a partner in the Norwalk Pollinator Pathway initiative with the goal of making each of our properties a habitat and refuge for all pollinators. We're also urging homeowners to join the campaign by making their yards safe for pollinators.

We partnered with the Hudson to Housatonic Regional Conservation Partnership (H2H), an organization dedicated to bringing together all the environmental conservation organizations that stretch from the Housatonic River to the Hudson River. H2H is mapping Westchester County in New York and Fairfield County in Connecticut to identify open space and its conservation and environmental resources, including wetlands, watercourses, forests, and animal habitat. The Norwalk Land Trust is partnering with H2H to map Norwalk.

In October we invited Amy Paterson, Executive Director of the Connecticut



D. Seeley Hubbard

Conservation Council, to address the NLT Board. Paterson provided valuable insight as to how to improve our governance, outreach to the community, and protection of our city's natural open space. She graciously agreed to facilitate a January retreat focused on improving the Land Trust's effectiveness.

Our White Barn Campaign is still in high gear to acquire the 15.4-acre property in Cranbury. We are applying for environmental grants and seeking enthusiastic environmentalists to help us protect this beautiful piece of property from development with 15 houses.

Recently, directors walked our 15-acre parcel at Chestnut Hill Road, and our Stewardship Committee has been overseeing 97+ acres of properties. More help is needed to maintain Norwalk's vital open spaces - volunteers are welcome.

As this year comes to a close the Norwalk Land Trust is excited at the prospects for an even more ambitious 2020. However, we could not do what we do without your support. Thank you all: our members, volunteers, contributors and supporters.

You make it all possible.

Seeley Hubbard
President



P.O. Box 34 Norwalk CT 06853

Non-profit Org.
US Postage Paid
Permit No 207
Norwalk CT 06856

Address Service Requested



Fall 2019

Please donate and become a member!

You are supporting continuing preservation of Norwalk open spaces. **Thank you!**

Name

Address

City, State, Zip

E-mail

Phone

Norwalk Land Trust does not share member information.

All membership contributions are tax deductible.

_____ \$1000+	_____ \$100
_____ \$500	_____ \$50 Family
_____ \$250	_____ \$30 Individual
_____ Other (all gifts appreciated)	
_____ My company will match my gift	

_____ Please use my donation for the purchase of the 15.4-acre White Barn Property

_____ White Barn 2020 Pledge

_____ White Barn 2021 Pledge

For Corporate/Professional memberships, please e-mail info@norwalklandtrust.org or visit norwalklandtrust.org.

I am interested in: _____ volunteering as a nature guide _____ property donation
_____ volunteering for stewardship work on NLT properties _____ contact me

Please use my e-mail address to receive NLT communications and to save paper and postage: YES _____ NO _____

Please clip and mail this form and membership donations to: Norwalk Land Trust, PO Box 34, Norwalk CT 06853